

## TILED ROOF UNIVERSAL VENTILATOR

General purpose ventilator for numerous tile types.

- High airflow
- Integral baffle and grille
- Suitable for new and refurbishment work
- High and low level applications



### Solution

Compatible with many styles of interlocking profiled and plain tiles, this universal ventilator may be used on roof pitches from 20 up to 70°. It has an airflow rating of 15,000mm<sup>2</sup>. Supplied with a choice of cap colours, integral insect screening, and a base incorporating external edge weathering strips and a lower edge flashing. An optional adaptor permits this ventilator to be connected to a standard 110mm pipe if required.

### Bill of Quantity / Specification Wording

#### Clause 900 G20

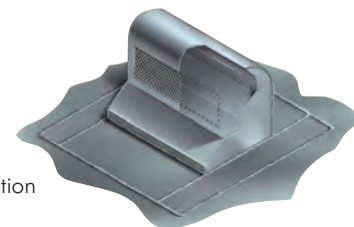
Universal Tiled Roof Ventilator by Cavity Trays of Yeovil Somerset BA22 8HU (01935 474769). Number \_\_\_\_\_.

<b>Product name</b>	Tiled Roof Universal Ventilator
<b>Size</b>	Base 405 x 440mm, cap 293 x 210mm
<b>Free airflow rating</b>	15,000mm <sup>2</sup>
<b>Colours</b>	Cap available in brown, terracotta or grey.
<b>Material</b>	PVCU/foam/aluminium
<b>Observations</b>	Not recommended for use with Redland Delta, Cambrian, Saxon, Richmond, Anchor Centurion, Marley Monach, clay pantiles or slate

## TYPE ERV EXTERNAL

### Roof Ventilator

- High free airflow of 6000mm<sup>2</sup> / 12,000mm<sup>2</sup>
- Natural lead finish
- Integral baffle and drain slot
- New and existing work application



### Solution

The Type ERV External Roof Ventilator is designed to permit the roof void to breathe and prevent condensation occurring. Intended for use on lead covered, felted or similarly decked roofs, the Type ERV is manufactured from lead to BS EN 12588:2006.

When positioned on a plinth or raised surface to suit the application and location, the Type ERV can provide a means of exhausting moist air out of the structure.

### Bill of Quantity / Specification Wording

#### Clause 900 G20

Type ERV External Ventilator by Cavity Trays of Yeovil Somerset BA22 8HU (01935 474769). Number \_\_\_\_\_.

<b>Product name</b>	Type ERV External
<b>Size</b>	210 x 140 x 160mm (6,000mm <sup>2</sup> ), 405 x 140 x 160mm (12,000mm <sup>2</sup> )
<b>Free airflow rating</b>	6,000mm <sup>2</sup> and 12,000mm <sup>2</sup>
<b>Colours</b>	Natural lead finish
<b>Material</b>	Lead
<b>Observations</b>	Integral baffle and drain-out slot